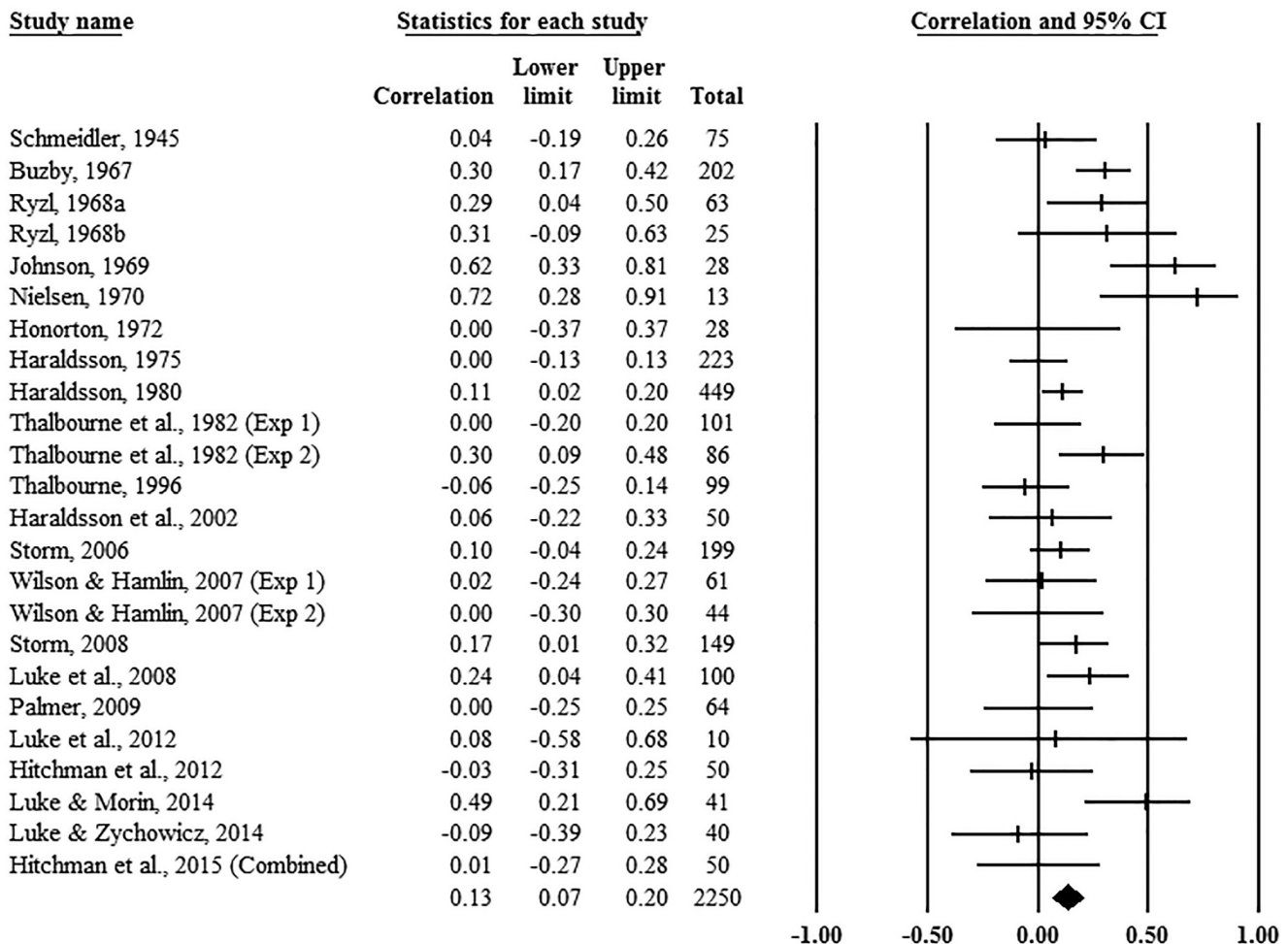


Correspondence

To the editor,

I am writing to make a correction to Zdrenka & Wilson’s (2017) publication “Individual Difference Correlates of Psi Performance in Forced-Choice Precognition Experiments: A Meta-Analysis (1945-2016),” which appeared in the spring 2017 issue of the JP.

On page 14, regarding the Belief in Psi meta-analysis, Storm’s (2008) effect size was incorrectly reported as $-.17$ when it should have been $.17$. Consequently—and with the addition of 2 more papers not previously included (Luke, Zychowicz, Richterova, Tjurina, & Polonnikova, 2012; Luke & Zychowicz, 2014), the meta-regression looking at year of publication as a moderator is no longer significant ($QR = 2.11, p = .15$). The updated mean weighted effect size r of the Belief in Psi meta-analysis is $.13$ ($p < .001$), with a 95% confidence interval between $.07$ and $.20$ (see diagram below). We offer our thanks to Lance Storm for pointing out the error to us.



References

- Luke, D., & Zychowicz, K. (2014). Comparison of outcomes with nonintentional and intentional precognition tasks. *Journal of Parapsychology, 78*, 223–234.
- Luke, D., Zychowicz, K., Richterova, O., Tjurina, I., & Polonnikova, J. (2012). A sideways look at the neurobiology of psi: Precognition and circadian rhythms. *NeuroQuantology, 10*, 580–590. <https://doi.org/10.14704/nq.2012.10.3.614>
- Storm, L. (2008). Investigations of the I Ching: I. Relationships between psi and time perspective, paranormal belief and meaningfulness. *Australian Journal of Parapsychology, 8*, 103–127.
- Zdrenka, M., & Wilson, M. S. (2017). Individual difference correlates of psi performance in forced-choice precognition experiments (1945-2016). *Journal of Parapsychology, 81*, 9–32.

Marco Zdrenka

Victoria University of Wellington

Kelburn Parade

Wellington 6012, New Zealand

Marco.Zdrenka@vuw.ac.nz